

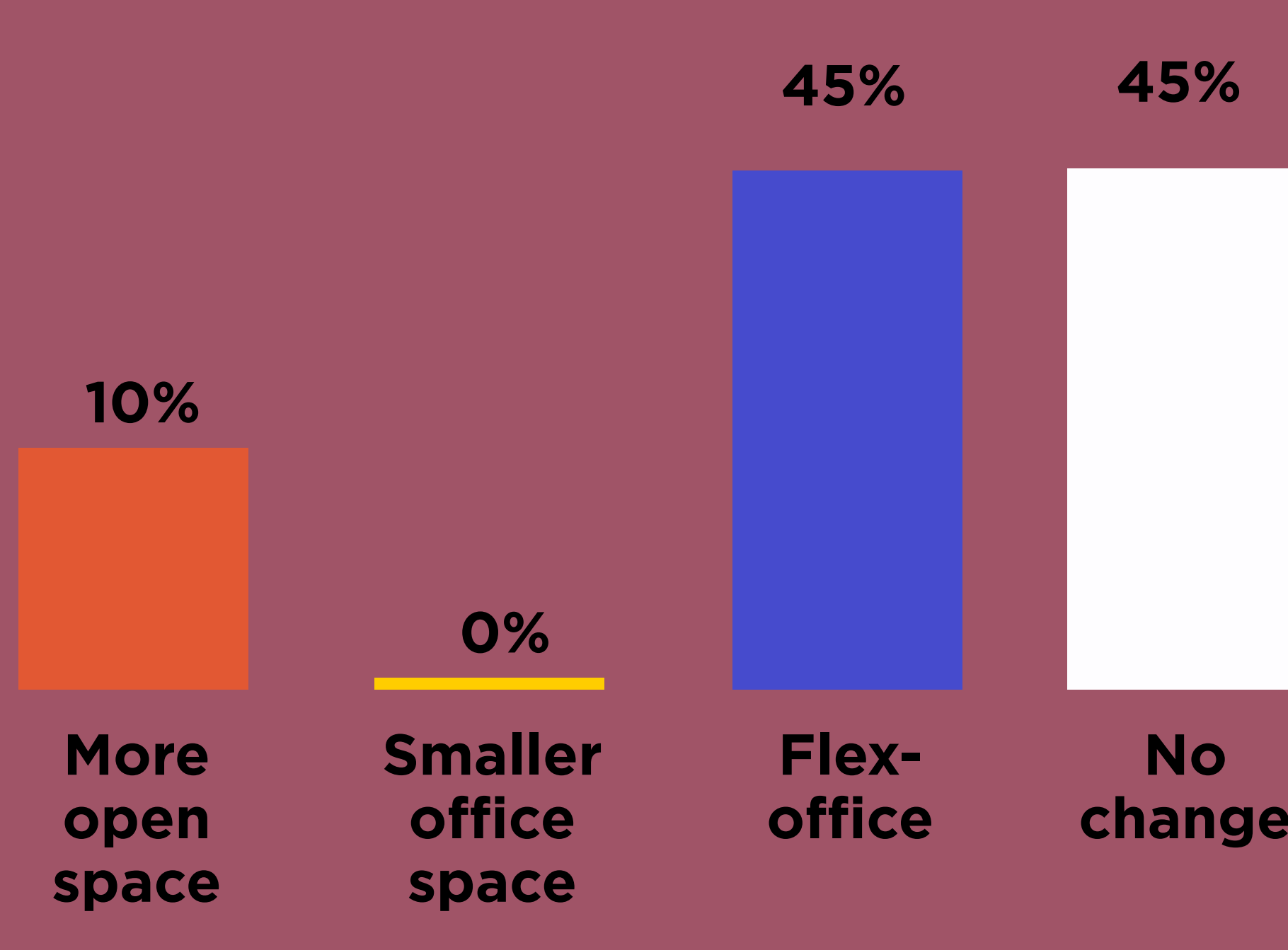
Benchmark 2021

## HOW CENTRAL BANKS MANAGED TELEWORK AND COVID INTERNALLY ?



ARMENIA, BRASIL, BOSTWANA, CYPRUS, EGYPT, FRANCE, GEORGIA, INDIA, LATVIA, LAOS, MOLDOVA, MOROCCO, NIGERIA, NORTH-MACEDONIA, PHILIPPINES, PORTUGAL, SPAIN, SRI LANKA

## HAVE YOU CHANGED THE WORK ENVIRONMENT TO ACCOMMODATE A HIGHER PROPORTION OF TELEWORKERS ?



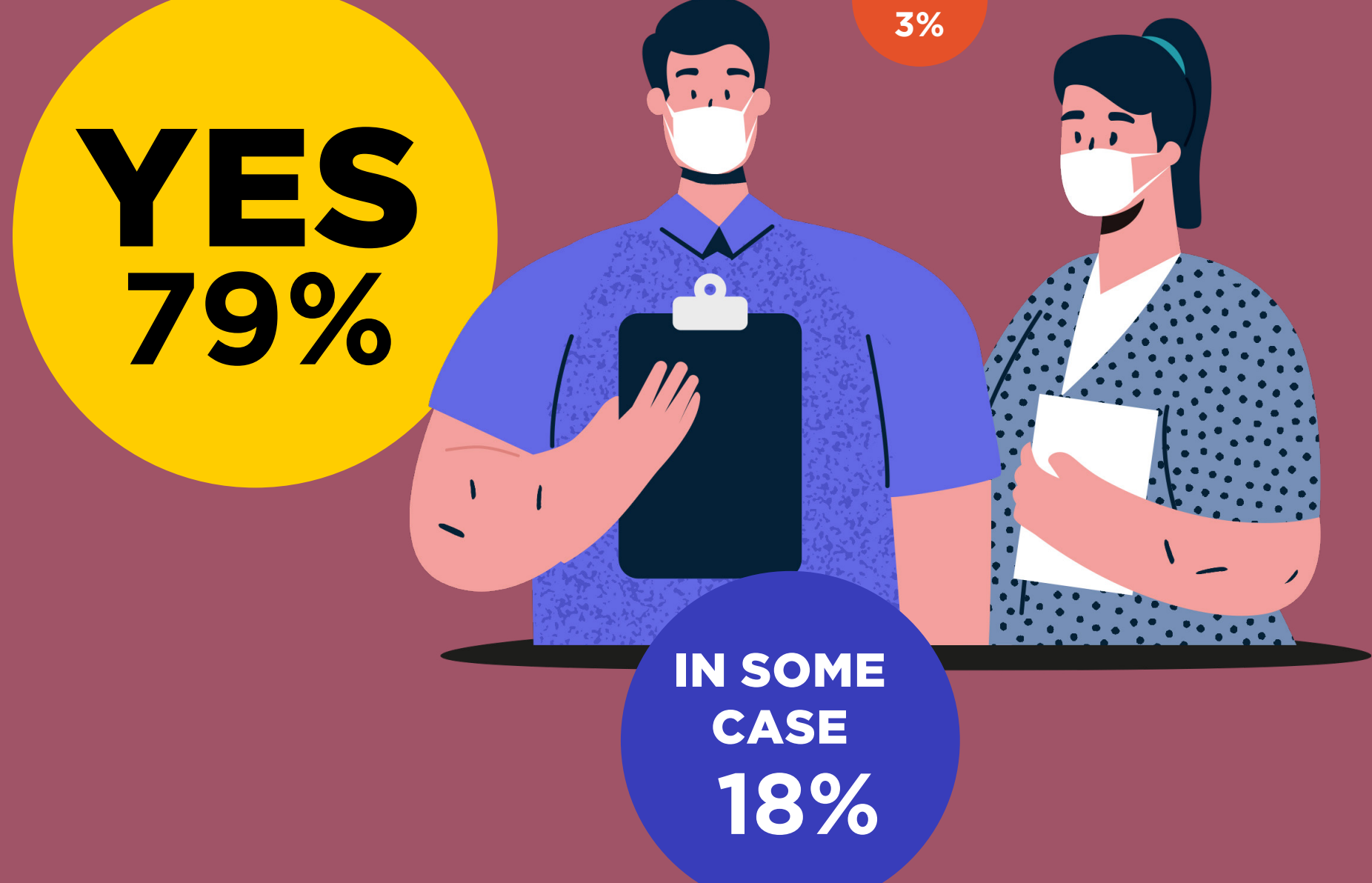
## HAVE YOU MODIFIED THE COLLECTIVE SPACES SUCH AS CANTEEN, CAFETERIA TO ADAPT TO THE GREATER PROPORTION OF TELEWORKING?



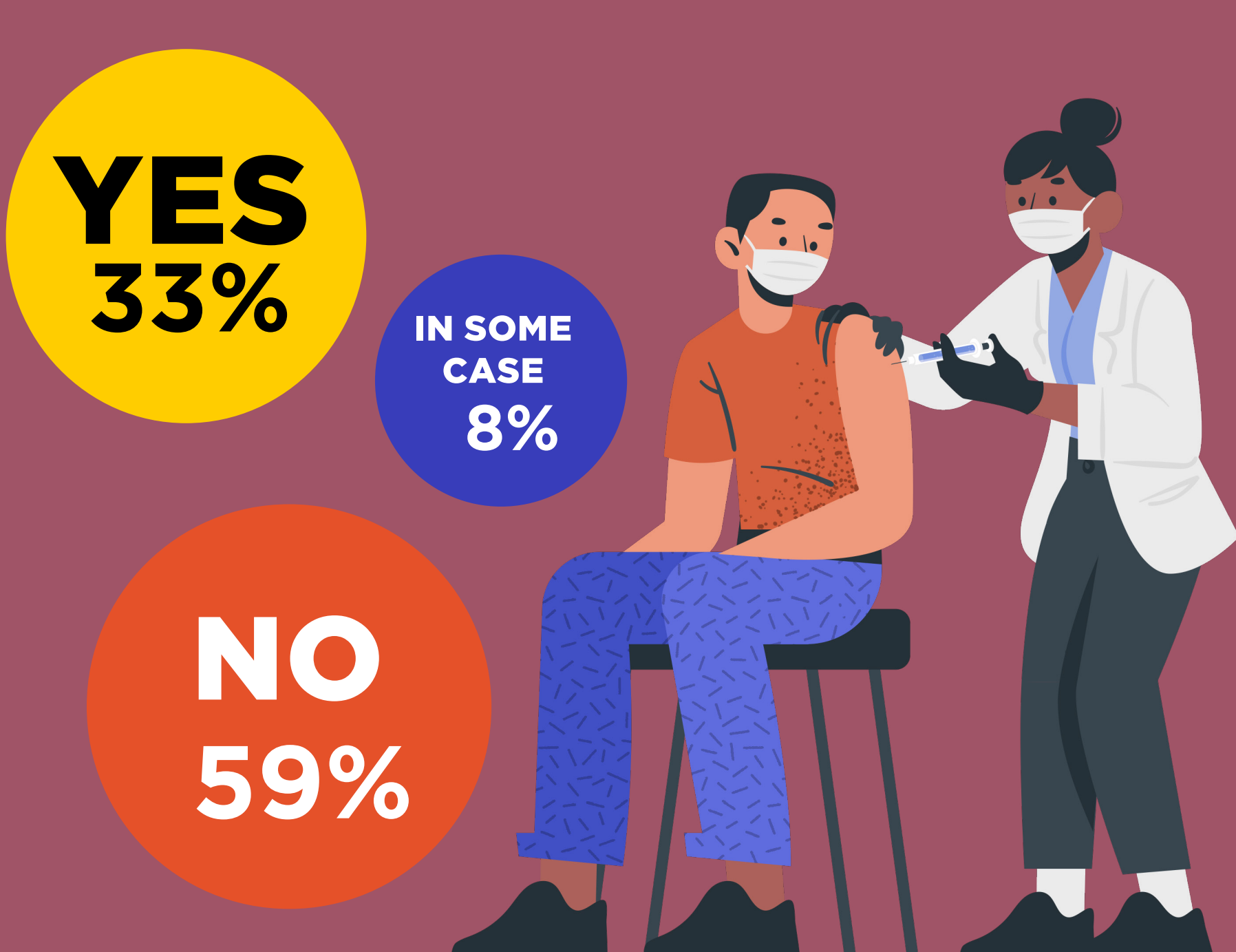
## HAVE YOU IMPLEMENTED NEW TOOLS TO ADAPT TO TELECOMMUTING (E.G OFFICE RESERVATION TOOL)?



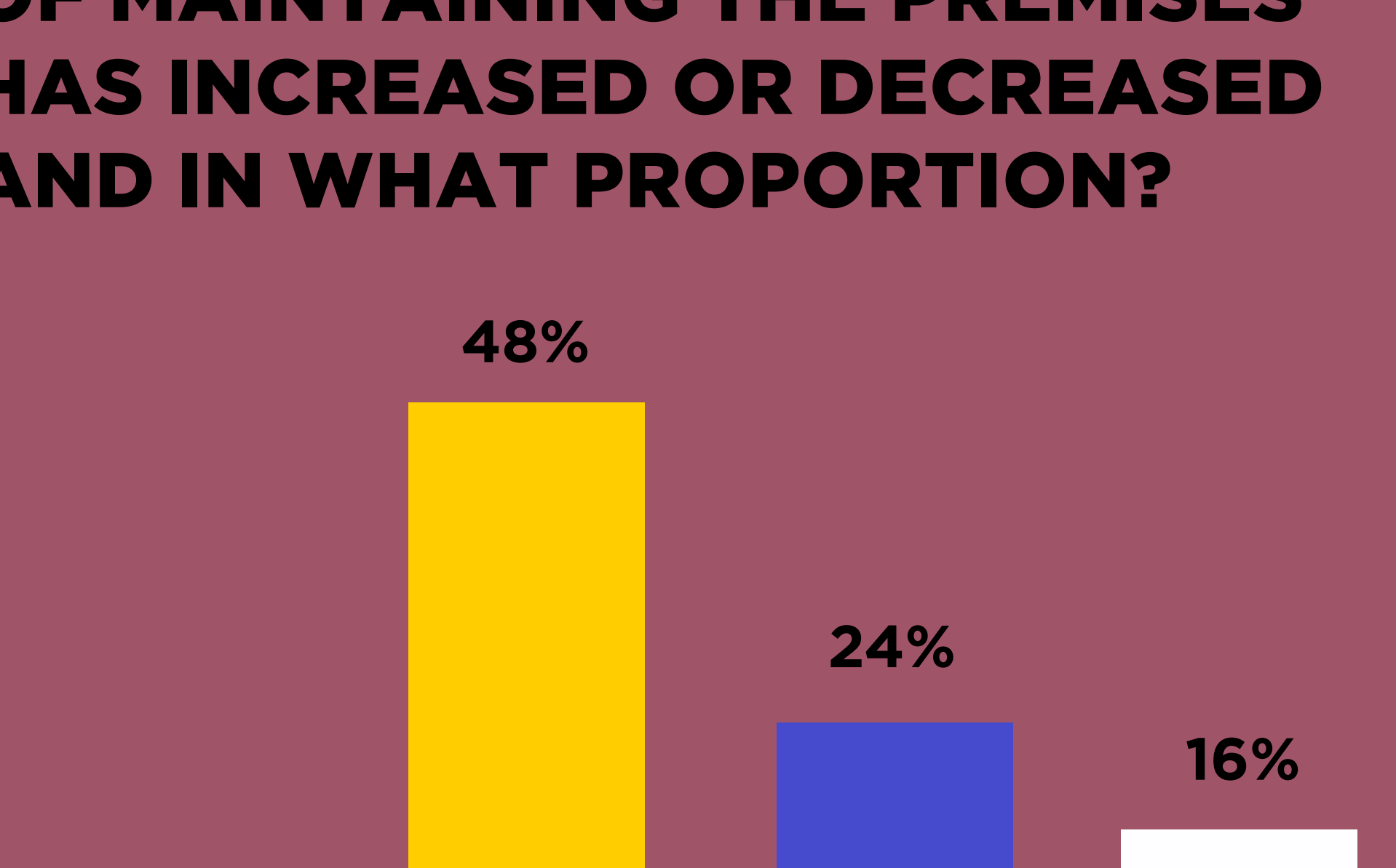
## IS IT STILL MANDATORY FOR YOUR EMPLOYEES TO WEAR MASKS IN THE OFFICE?



## WILL VACCINATION (OR SANITARY PASS) BE MANDATORY FOR YOUR EMPLOYEES?



## WITH THE ANTI-COVID MEASURES, WOULD YOU SAY THAT THE COST OF MAINTAINING THE PREMISES HAS INCREASED OR DECREASED AND IN WHAT PROPORTION?



DATA CONTAINED IN THIS DOCUMENT ARE CALCULATED FROM PARTICIPANTS' RESPONSES TO A QUESTIONNAIRE CIRCULATED PRIOR TO THE CONFERENCE. NO ATTEMPT HAS BEEN MADE TO VERIFY ACCURACY. DEFINITIONS AND METHODOLOGIES DIFFER ACROSS JURISDICTIONS.

