

REDUCING THE CARBON FOOTPRINT OF A CENTRAL BANK

May 30th 2023





**Angola, Bahrain, Belgium, Brazil, Denmark, Egypt,
Estonia, European Central bank, France, Germany,
Greece, Haiti, Hong Kong, Indonesia, Italy, Malaysia,
Mexico, Mongolia, Nigeria, Northern Macedonia,
Portugal, Senegal-BCEAO, Singapore, Spain, Thailand,
Tunisia, Ukraine, United Arab Emirates, United States-
FED, Uruguay**



**ARE THERE ANY GOVERNMENT
REGULATIONS YOUR INSTITUTION
IS SUBJECT TO...
REGARDING ENERGY SAVINGS IN
YOUR COUNTRY?**

yes, mandatory

42%

27%

yes, guideline

30%

not yet but planned



WERE/ARE THERE ANY NEW SPECIFIC GOVERNMENT REGULATIONS IN THIS FIELD IN YOUR COUNTRY LAST WINTER OR NEXT SUMMER THAT APPLY TO YOUR INSTITUTION ?

yes, mandatory

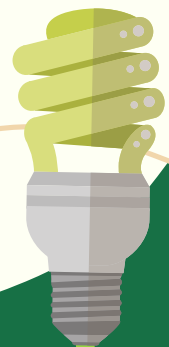
36%

27%

yes, guideline

36%

not yet but planned



HAS YOUR INSTITUTION IMPLEMENTED A FORMAL ENERGY SAVINGS POLICY? IF SO, SINCE WHEN HAS IT BEEN IN PLACE? AND WHEN WAS IT LAST UPDATED?

yes **40%**

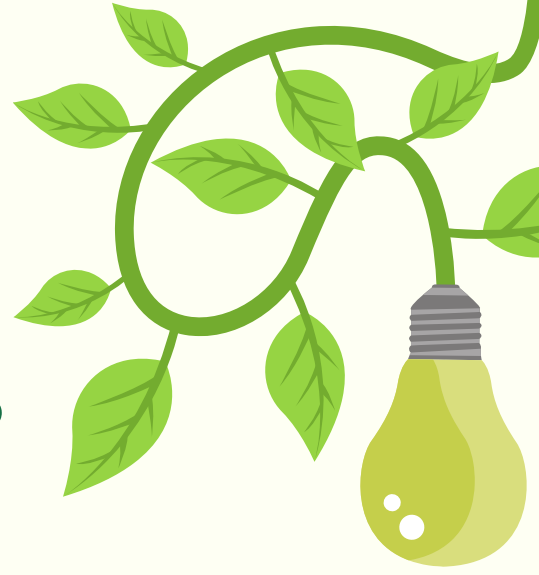
30%

not yet, but planned

no **30%**



**IS THIS FORMAL APPROACH
ACCOMPANIED BY
QUANTIFIED MESURABLE
OBJECTIVES AND/OR
PERFORMANCE INDICATORS
(KPIs)?**



0%

**yes, with quantified
mesurable objectives**

26%

**yes, with quantified
mesurable objectives and
KPIs**

41%

not yet, but planned

19%

no

15%

n/a



IS THERE AN ENERGY MANAGEMENT SYSTEM IN PLACE? IF SO, DOES IT MEET STANDARDS SUCH AS ISO 50001 OR EMAS?

yes, in accordance with a national/international standard

11%

yes (but without compliance to a national/international standard)

15%

not yet but planned

33%

no

41%



**IF NO, IS ENERGY CONSUMPTION
MANAGED IN A SYSTEMATIC
AUTOMATED WAY? FOR EXAMPLE, ON
THE BASIS OF PROCEDURES, ALERTS,
AUTOMATIC START-UP OF HEATING,...**

yes
33%

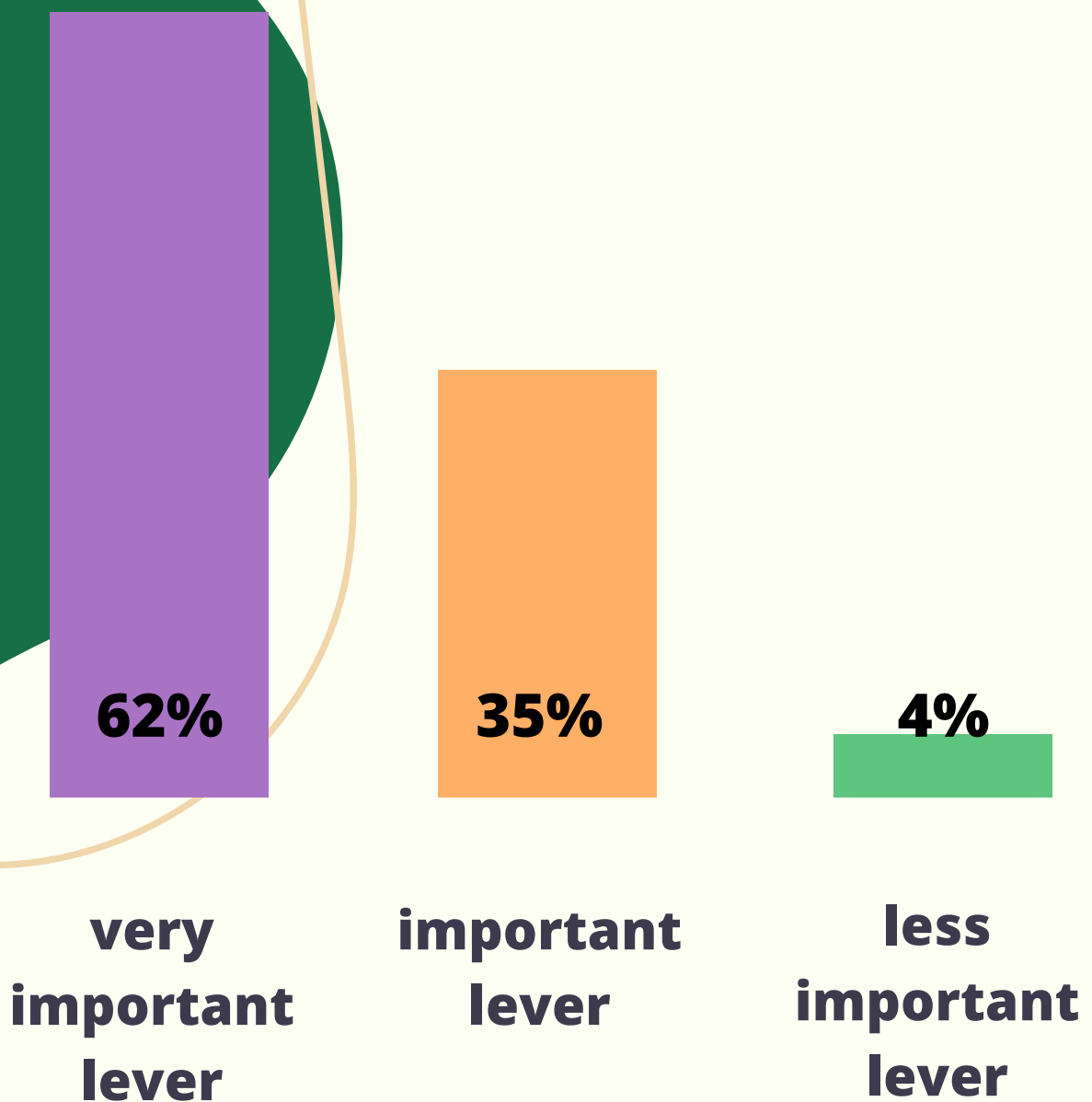
19%
no

11%
**not yet but
planned**

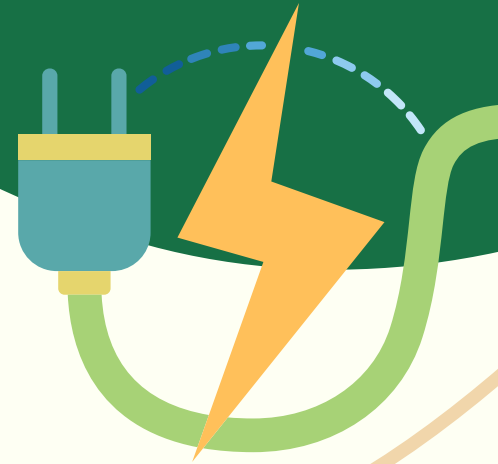
n/a **37%**



TO WHAT EXTENT DO YOU BELIEVE THAT REDUCING YOUR ENERGY CONSUMPTION IS A LEVER IN YOUR EFFORTS TO REDUCE GHG EMISSIONS?



WHICH MEASURES ARE IN PLACE/IMPLEMENTED BY YOUR INSTITUTION TO SAVE ENERGIES ? PLEASE SPECIFY IF MANDATORY OR VOLUNTARY BASIS/GUIDELINES ADRESSED ?



Max. temperature heating	21%
Min. temperature cooling	21%
No heating of common spaces	11%
All non security lights must be switched off at night	31%
Water heaters in toilets and/or kitchenettes switched off	16%
Increase teleworking (For instance make teleworking mandatory several days a week or implement a mandatory teleworking day for all eligible staff)	16%
Staff gathering to reduce the area to be heated and lighted? (For instance closing some areas/buildings some days)	3%
Mandatory shutdown of computers, screens, printers and photocopiers at night?	35%
Works on heating systems / facilities	45%
Lighting replacement by less consuming lights (LEDs)	46%
Substitutional installations (photovoltaic, etc.)	26%
Other measures	24%
None of these	4%

WHAT DO YOU THINK ARE THE MAIN OBSTACLES OR DIFFICULTIES (INTERNAL AND EXTERNAL), AT YOUR INSTITUTION, TO DO MORE IN THIS FIELD ?

16%

people do not always care / Communication

18%

budget

15%

lack of incentives from an operational point of view

23%

lack of clear environmental laws, targets and guidelines

18%

technical feasibility

10%

lack of information / training

2%

others



HAVE YOU TAKEN ANY SPECIFIC MEASURES FOR CERTAIN BUSINESS LINES? IF YES, PLEASE SPECIFY THE BUSINESS LINES CONCERNED.

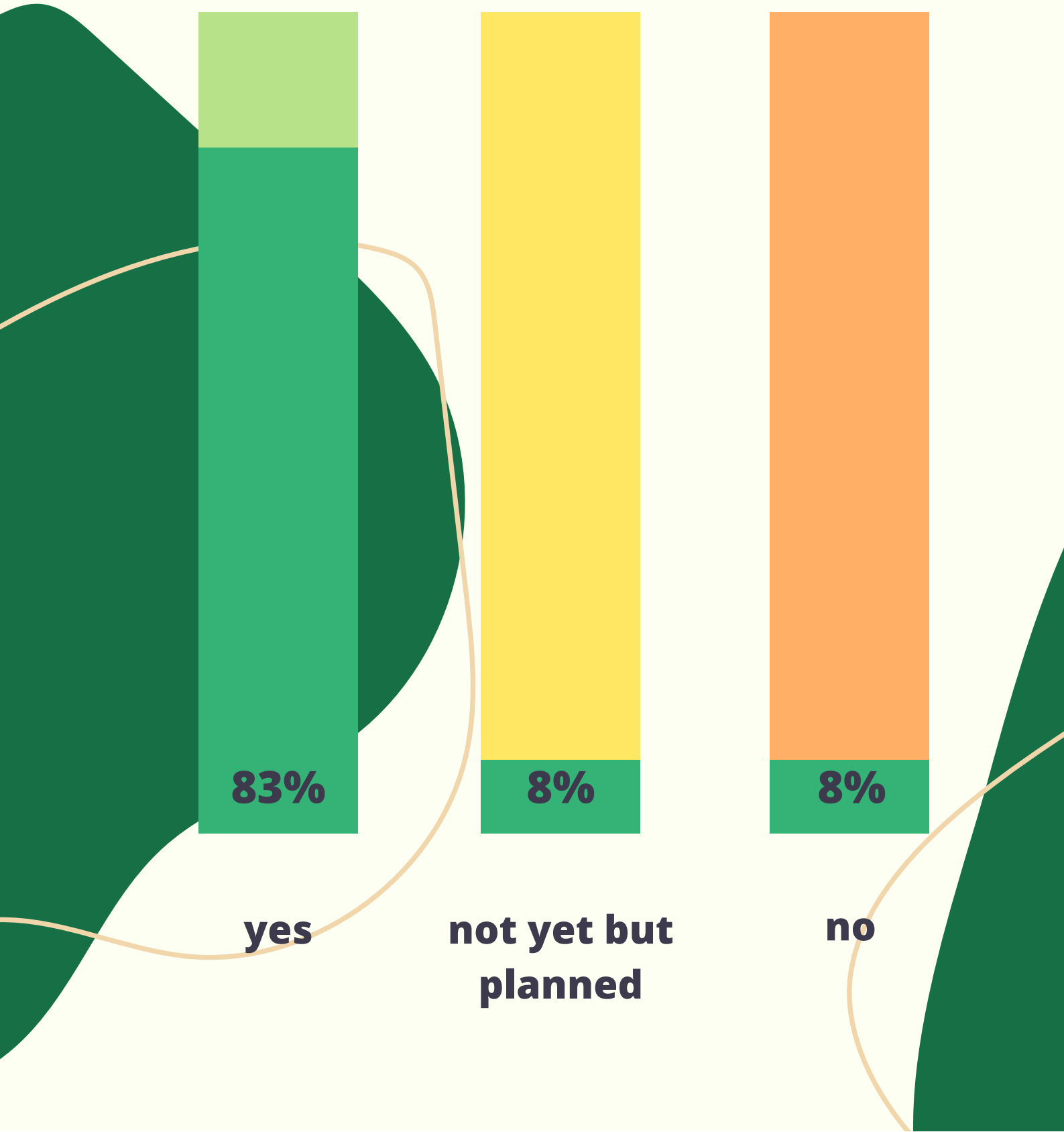
yes

22%

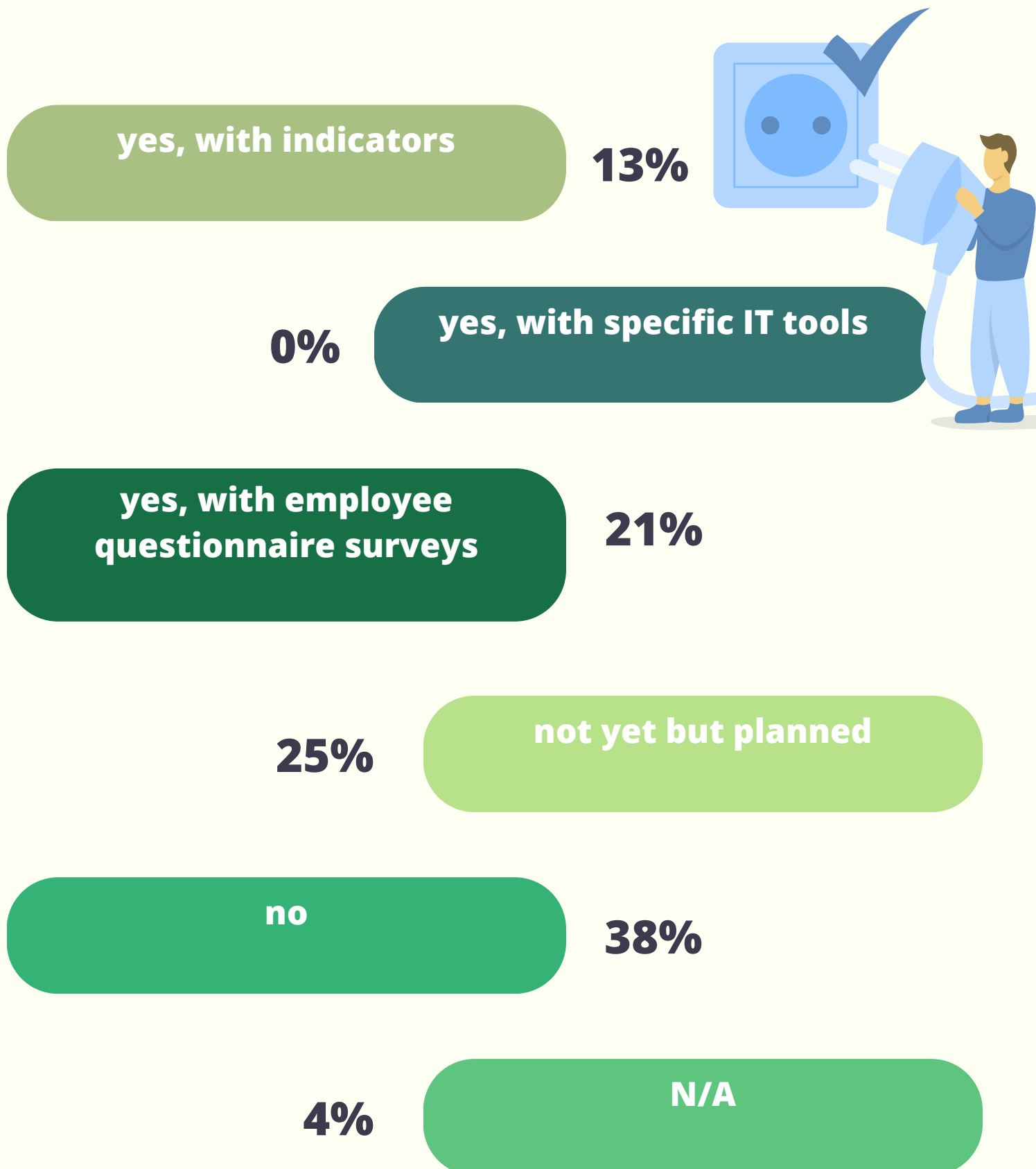
**no, all business lines
are treated in the same
way**

78%

ARE THERE ANY AWARENESS RAISING ACTIONS WITHIN YOUR INSTITUTION AIMING AT IMPROVING EMPLOYEE COMMITMENT TOWARDS ENERGY CONSUMPTION?



ARE YOU ABLE TO EVALUATE THE IMPACT OF ANY AWARENESS RAISING ACTION ON THE REDUCTION OF ENERGY CONSUMPTION (E.G. EFFICIENCY INDICATORS) ?





Ibfi

DATA CONTAINED IN THIS DOCUMENT ARE CALCULATED FROM PARTICIPANTS' RESPONSES TO A QUESTIONNAIRE CIRCULATED PRIOR TO THE CONFERENCE.

NO ATTEMPT HAS BEEN MADE TO VERIFY ACCURACY.

DEFINITIONS AND METHODOLOGIES DIFFER ACROSS JURISDICTIONS.

ALL FIGURES HAVE BEEN ROUNDED TO THE NEAREST WHOLE NUMBER. HENCE, IN SOME CASES THE ADDITION OF PERCENTAGES MAY NOT YIELD 100%