

Balance of payments – France • April 2022

The current account deficit remained stable in April

As in March, the current account deficit stood at 3.4 billion euros in April (seasonally and working-day adjusted data). The relative stability of the goods deficit (-10.3 billion euros in April against -10.8 billion in March) masked, nevertheless, a new increase of the energy bill (8.5 billion euros in April against 7.5 billion in March), counterbalanced by the lower deficit of goods excluding energy. At the same time, the surplus on services eroded very slightly to 6.2 billion euros in April against 6.6 billion in March.

The financial account (non-seasonally adjusted) showed net capital inflows of 13.7 billion euros. Portfolio investment recorded net investments abroad of 30.1 billion euros, offset by net inflows in loans and borrowings of 43.9 billion euros.

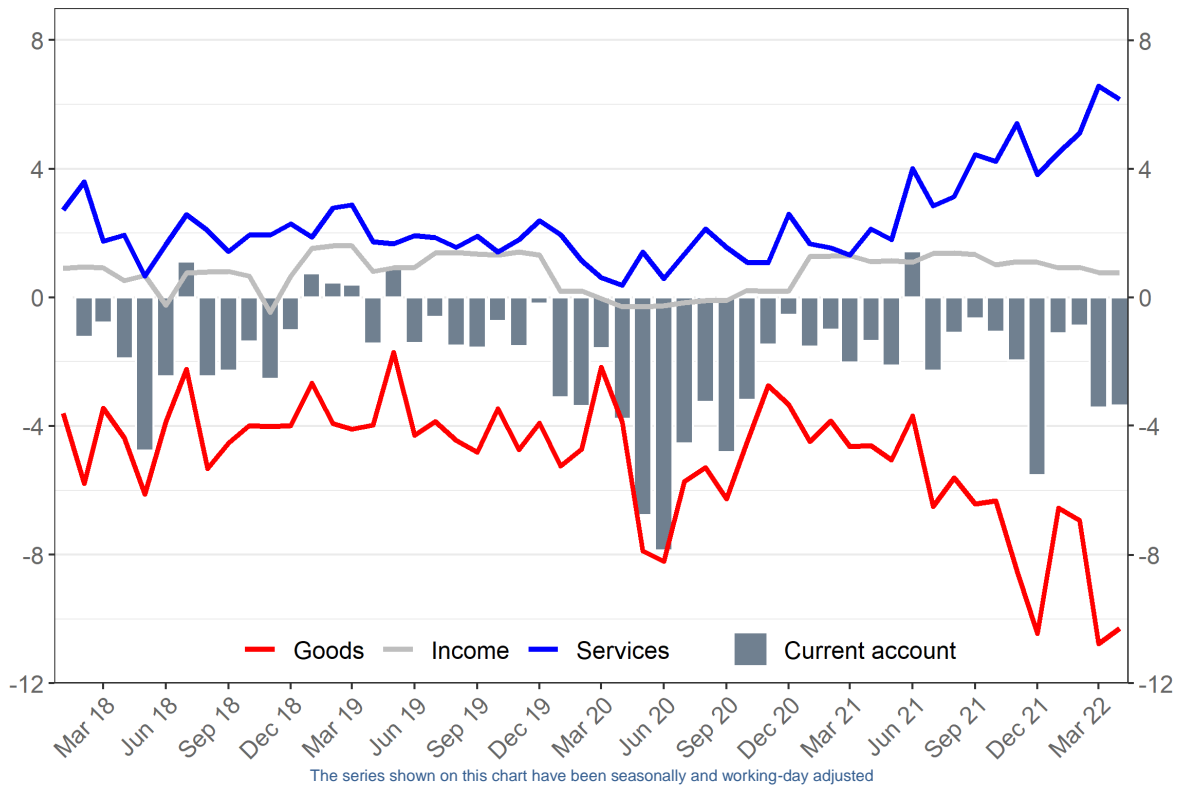
France's balance of payments

(EUR billions)	2019 (a)	2020 (a)	Mar-22 (b)	Apr-22 (b)
Current account (seasonally and working-day adjusted)	-7.1	-43.7	-3.4	-3.4
<i>Goods</i> (1)	-46.6	-59.9	-10.8	-10.3
Energy	-42.7	-24.4	-7.5	-8.5
Goods excl. Energy	-4.0	-35.5	-3.3	-1.8
<i>Services</i>	24.0	16.4	6.6	6.2
Travel	11.6	4.2	1.8	1.7
Transport services	-4.0	-2.7	2.3	2.3
Professional and management consulting services, Research and development and Technical services, trade-related and other business services	6.8	7.3	1.5	1.1
Other services (2)	9.6	7.6	0.9	1.1
<i>Primary and secondary income</i> (3)	15.6	-0.2	0.8	0.8
Capital account (not adjusted)	2.0	2.0	0.9	0.8
Financial account (not adjusted)	-19.6	-52.5	8.2	-13.7
<i>Direct investment</i>	4.9	36.0	-0.3	0.1
- Abroad	56.1	45.9	6.5	5.4
- In France	51.3	9.9	6.7	5.3
<i>Portfolio investment</i>	-68.7	-36.4	-55.4	30.1
- Assets	62.5	144.3	2.1	1.0
- Liabilities	131.2	180.7	57.5	-29.1
<i>Financial derivatives</i>	3.7	-23.8	-5.6	-0.3
<i>Loans and deposits</i> (4)	37.8	-32.3	70.5	-43.9
<i>Reserve assets</i>	2.8	4.0	-1.1	0.2
Net errors and omissions	-14.5	-10.8	14.6	-14.1

(a) Yearly 2020 data (b) Provisional data
(1) to (4) See methodological notes on page 2.

Source and production : BANQUE DE FRANCE – DGSEI

Current account balance and its components (billion euros)



Methodological notes relating to page 1 table

(1) Data on trade in goods are FOB-FOB values, which means without cost, insurance and freight. This expenditure is recorded in the services item. Exchanges of goods cover General merchandise published by the Directorate General of Customs and Excise (DGDDI) on one side, merchandising and methodological adjustments calculated by the Banque de France, on the other side. In order to ensure the comparability of French balance of payments with those of other countries and conformity with the international standards, the international standard for Balance of Payments statistics is released under the aegis of the International Monetary Fund. The key concept for the balance of payments is the concept of economic ownership which is consistent with the national accounts.

(2) Services other than travel (tourism and professional travels), transport services, professional and management consulting services, R&D and development and technical services, trade-related and other business services include manufacturing, maintenance and repair, construction, insurance and pension services, financial services, charges for the use of intellectual property, telecommunication, computer and information services, personal, cultural and recreational services and government goods and services.

(3) Income includes primary and secondary incomes. Primary income refers to the flows received by economic agents for their participation in the production process ("compensation of employees") or for the provision of financial assets ("investment income") or for the rental of natural resources ("rent"). Taxes and subsidies on products and production are also included in primary income. Secondary income records current transfers between residents and non-residents. A transfer is a transaction that involves the provision of a good, service, financial asset or another non-produced asset without receiving something of economic value in exchange.

(4) The "other investment" (loans and deposits) component of the financial account includes all transactions in financial assets and liabilities with non-residents that do not concern direct investment, portfolio investment, financial derivatives or reserve assets. In practice, this mainly concerns bank deposits and interbank lending, as well as loans and deposits made by insurance companies and all kinds of investment companies and funds.

On the Banque de France website a detailed [methodological note on balance of payments and international investment position](#) can be found. Highlights on specific topics are also available:

- [foreign direct investments \(English and French\)](#),
- [remittances \(French\)](#),
- [international tourism in France \(French\)](#),
- [international banking activity \(English and French\)](#),
- [banks foreign establishment \(French\)](#),
- [net foreign assets \(English and French\)](#),
- [business services \(French\)](#).

